

Logitech Base Bundle(991-000400)

Logitech Base Bundle - Kit per videoconferenza (Logitech Tap IP,Logitech RoomMate) - Zoom Certificato,Certificato per i team Microsoft



Specifiche principali

Descrizione Prodotto	Logitech Base Bundle - kit per videoconferenza
Tipo di dispositivo	Kit per videoconferenza
Contenuto kit	Logitech Tap IP,Logitech RoomMate
Dimensioni (LxPxH)	16.1 cm x 21.1 cm x 3.45 cm
Localizzazione	Indonesia,Europa,Sudest Asiatico
Dispositivo di input	Telecomando
Networking	Ethernet,Fast Ethernet,Gigabit Ethernet,IEEE 802.11b,IEEE 802.11a,IEEE 802.11g,IEEE 802.11n,IEEE 802.11ac
Alimentazione	100-240 V c.a. V
Certificazione Software	Zoom Certificato,Certificato per i team Microsoft
Garanzia del produttore	2 anni di garanzia

Specifiche estese

Generale

Tipo di dispositivo	Kit per videoconferenza
Contenuto kit	Logitech Tap IP,Logitech RoomMate
Larghezza	16.1 cm
Profondità	21.1 cm
Altezza	3.45 cm
Localizzazione	Indonesia,Europa,Sudest Asiatico

Dispositivo di input

Tipo	Telecomando
------	-------------

Networking

Tecnologia di connessione	Senza fili,cablato
Data Link Protocol	Ethernet,Fast Ethernet,Gigabit Ethernet,IEEE 802.11b,IEEE 802.11a,IEEE 802.11g,IEEE 802.11n,IEEE 802.11ac
Caratteristiche	Tecnologia MU-MIMO,slot di sicurezza (compatibile con chiusura di sicurezza Kensington)
Standard di conformità	IEEE 802.11b,IEEE 802.11a,IEEE 802.11g,IEEE 802.11n,IEEE 802.11ac

Espansione/connettività

Interfacce	1 x audio / video - ingresso HDMI
	2 x audio / video - uscita HDMI
	1 x rete - Ethernet 10Base-T/100Base-TX/1000Base-T - RJ-45
	3 x SuperSpeed USB 3.0

Miscellanea

Kit montaggio	Incluso
Certificazione Software	Zoom Certificato, Certificato per i team Microsoft
Standard di conformità	AES-128

Alimentazione

Dispositivi di alimentazione	Alimentatore - esterno
Tensione richiesta	100-240 V c.a. V

Garanzia del produttore

Servizi e supporto	Garanzia limitata - 2 anni
--------------------	----------------------------

Parametri ambientali

Temperatura min esercizio	0 °C
Temperatura max esercizio	40 °C
Umidità ambiente operativo	10 - 95%

Si declina ogni responsabilità relativa ad omissioni o errori relativi alle informazioni e le specifiche tecniche riportate nella scheda prodotto.



DATA SHEET

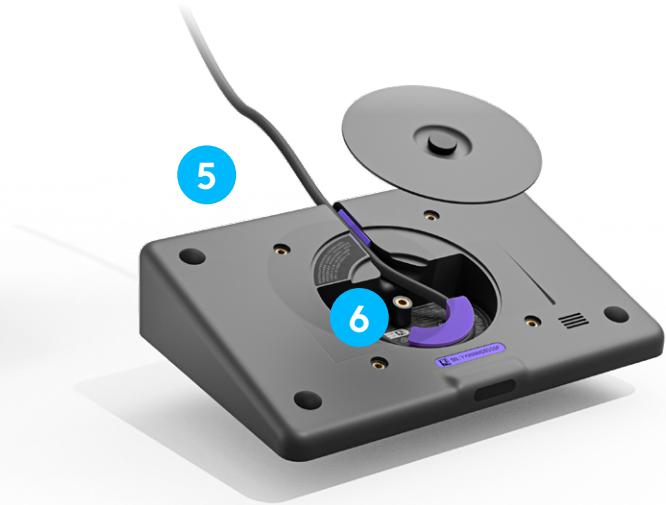
LOGITECH TAP IP

Meetings start with just one touch with Logitech Tap IP, a network-connected touch controller for Logitech room solutions. With clean cable management and a range of available mounts, Tap IP installs easily and stays up and running.

MEETING ROOM TOUCH CONTROLLER WITH POE CONNECTIVITY

More than a meeting room controller, Logitech Tap IP helps you achieve a consistent and seamless user experience across your video conferencing deployment.

This purpose-built touch controller has just the right presence with a spacious 10.1" display and sleek, low profile. Take advantage of its single Power over Ethernet (PoE) connection and variety of mounting options to install the touch controller anywhere in the room. Prevent accidental disconnections thanks to built-in cable retention and strain relief, and be confident that each room stays ready for the next video meeting.

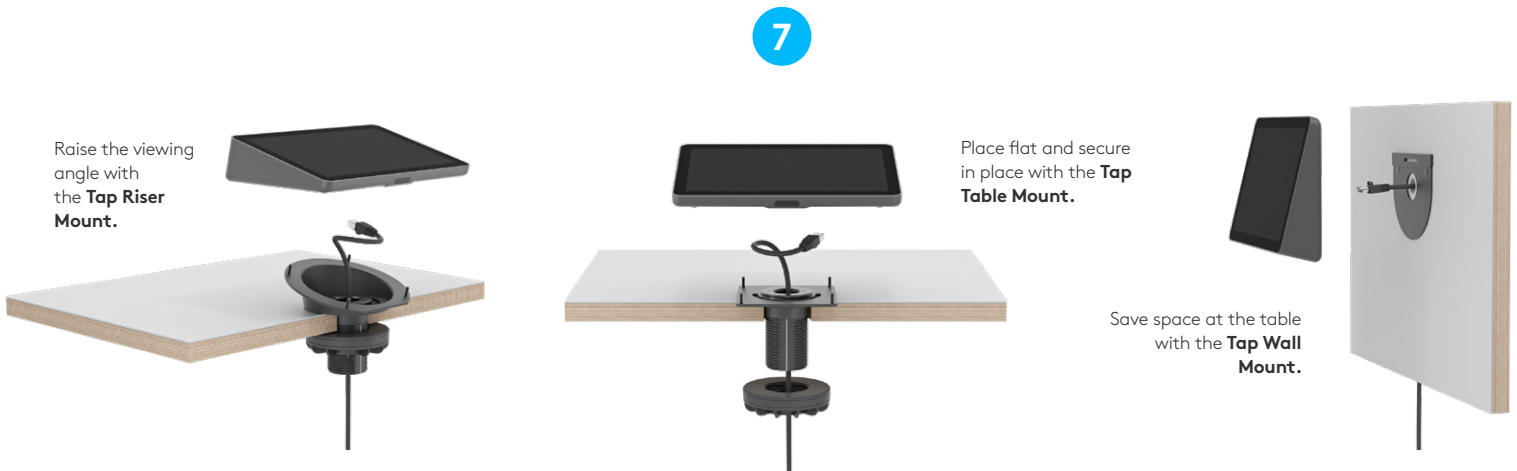


EASY TO USE

- 1 One-touch join:** Easily start and join meetings with just one tap.
- 2 10.1" touch display:** Spacious and responsive touch screen resists fingerprints for high legibility, and is sealed to protect components.
- 3 Motion sensor:** Built-in motion sensor allows for always-on readiness when a user approaches, and saves power when idle.
- 4 Sleek, low profile:** Comfortable 14° angle allows for easy viewing, while providing an unobtrusive presence in the room.

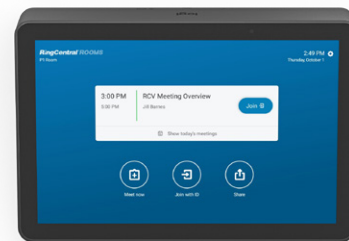
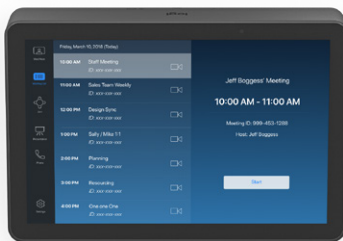
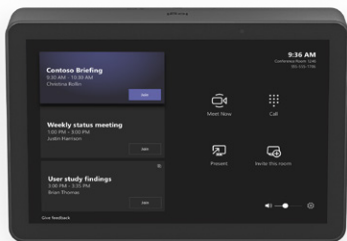
SIMPLE TO SET UP

- 5 Single PoE cable:** One cable for both power and data means flexible placement anywhere in the room, untethered to the room system and without the need for long cable runs.
- 6 Clean cable management:** Built-in cable retention and strain relief system hides the PoE cable entirely within its enclosure, and secures it to prevent unwanted disconnections.
- 7 Multiple mounting options:** Secure Tap IP almost anywhere in the room with available Table, Riser, and Wall Mounts for convenient placement near room participants.



PICK YOUR PLATFORM

Tap IP can be configured with leading video conferencing services to deliver a seamless and consistent meeting experience across your deployment.

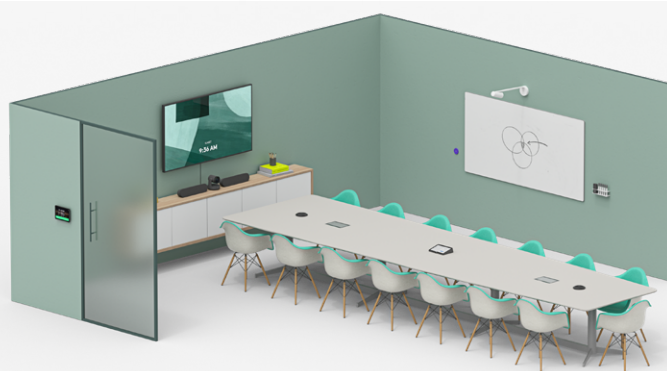


VIDEO MEETINGS FOR ANY ROOM

Easily transform meeting rooms into video collaboration spaces with Tap IP and Logitech room solutions. Start with pre-configured solutions that include video bars, conference cams, computes and other devices, and add scheduling panels, digital whiteboards, and accessories to power effective collaboration. To learn more, visit www.logitech.com/room-solutions.

Fits rooms of virtually any shape or size

From inside the room to just outside, Logitech room solutions work with partner platforms to provide a seamless and consistent meeting experience.




Build your meeting rooms

Logitech room solutions include everything you need to build and customize video meeting rooms.

Featuring Tap Scheduler, Tap IP, RoomMate, Scribe, and our Rally video bars and conference cams.





PRODUCT SPECS		
Device: Total Height x Width x Depth 2.21 x 9.69 x 6.74 in 56.1 x 246.2 x 171.3 mm 1.0 kg (2.2 lbs)	Touchscreen 10.1" diagonal screen Display Angle: 14° Viewing Angle: 85° (up/down/left/right) Resolution: 1280 x 800 Display Type: IPS (In-Plane Switching)	LCD Panel with LED Backlighting Capacitive, 10 points multi-touch Brightness: 400 nits Contrast: 1000:1 Anti Fingerprint: Oleophobic coating
POWER & PORTS	INTERFACES	PACKAGE CONTENTS
Power over Ethernet (PoE), IEEE 802.3af Type 1, Class 3 device Ethernet: 10/100mbps WiFi: 802.11a/b/g/n/ac Bluetooth 5.0	Internal cable retention and strain relief system Integrated ultrasonic speaker Integrated PIR Motion Sensor Integrated accelerometer Integrated ambient light sensor 100mm x 100mm VESA FDMI	Tap IP Touch Controller VESA Mounting Screws (4) Microfiber Cloth Documentation
COMPATIBILITY & CERTIFICATIONS	ENVIRONMENTAL	OPTIONAL ACCESSORIES
Logitech Tap IP is certified or compatible as a touch controller for video conferencing services including: Microsoft Teams an Android Zoom Rooms (any) RingCentral Rooms™ See www.logitech.com/support/tap-compatibility for the latest certification and compatibility information.	Operating Temperature: 0 to 40°C Storage Temperature: -40 to 70°C Humidity: 10 to 95%	Table Mount Riser Mount Wall Mount
	SECURITY	DEVICE MANAGEMENT
	Full Disk Encryption: AES-128 Data Encryption: Symmetric Keys, PKI Device Identity: Protected by device attestation Key Protection: Arm TrustZone, RPMP Device Security: Kensington Lock	Monitor and manage with Logitech Sync remote management, Microsoft Teams Admin Center, and Zoom Device Management platforms.
WARRANTY		PART NUMBERS
	Ensure peace of mind for the typical depreciation and replacement cycle of most conference room equipment through the purchase of an extended warranty, which adds one additional year to the original Logitech manufacturer's two-year warranty. Contact your reseller for availability. Standard 2-year limited hardware warranty included	Logitech Tap IP in Graphite 952-000085 Logitech Tap IP in White 952-000088



DATA SHEET

LOGITECH ROOMMATE

Turn any space into an appliance-based video conferencing room with RoomMate, an appliance purpose-built for video collaboration. RoomMate runs CollabOS, the unifying operating system within Logitech's video bar appliances, providing a simple, consistent deployment across all meeting rooms.

COLLABOS APPLIANCE FOR SUPPORTED CONFERENCE CAMERAS AND ROOM SOLUTION PERIPHERALS

By connecting RoomMate with MeetUp or a Rally System, IT can deploy Microsoft Teams Rooms on Android, Zoom Rooms Appliances, or other video conferencing solutions in any meeting space. For rooms with custom audio systems, RoomMate is compatible with select partners like Biamp, QSC, and Shure.

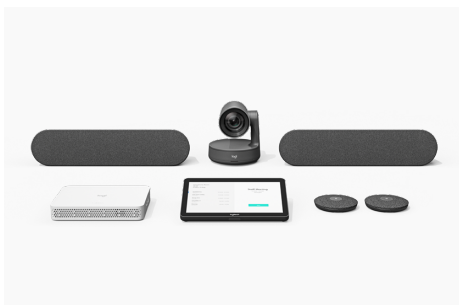
RoomMate is built for deployment and management at scale. In a low-profile form factor, RoomMate delivers all the capabilities needed for HD video conferencing with one or two displays and can be mounted securely and out of sight. Easily monitor and manage RoomMate together with other devices through Logitech Sync, Teams admin center, or Zoom Device Management.



Logitech RoomMate shown with Rally Plus system

PURPOSE-BUILT FOR VIDEO COLLABORATION

RoomMate runs CollabOS, which allows you to easily deploy Microsoft Teams Rooms on Android, Zoom Rooms Appliances, and other leading video conferencing services.



MODULAR VERSATILITY

Turn any space into an appliance-based video conferencing room. Connect the modular Rally System or MeetUp to RoomMate and add a Logitech Tap touch controller, Scribe whiteboard camera,* and other collaboration devices to your meeting rooms.



POWER, WITH CONNECTIONS

In a sleek, low-profile form factor, RoomMate delivers all the power you need for HD video conferencing in rooms with one or two displays.



FLEXIBLE, NEAT, SECURE

Mount RoomMate securely and out of sight. The optional Compute Mount supports discreet installation and cable retention behind displays, inside cabinets, and under tables.

*Scribe compatibility may vary, see www.logitech.com/support/scribe-compatibility for the latest information.

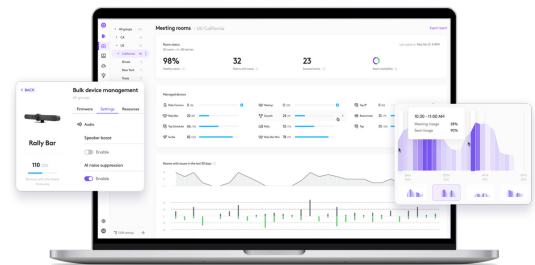
VERIFIED AUDIO PARTNERS

Use the audio system of your choice. Default to the conference camera's audio when you pair RoomMate with MeetUp or Rally System. Or choose a verified audio system from select partners when RoomMate is used alongside Rally Camera.



SIMPLE TO MANAGE

Easily manage your Logitech video collaboration devices with Logitech Sync. Monitor room health, deploy updates, and modify settings all from a single cloud-based platform. And with Sync Insights, you can see how meeting spaces are utilized over time.



PURPOSE-BUILT FOR VIDEO COLLABORATION

Deploy video collaboration solutions at scale with CollabOS, the secure operating system powering Logitech appliances and select devices.



GENERAL		INTERFACES
<p>Appliance Mode: Supports Microsoft Teams Rooms on Android, Zoom Rooms, RingCentral Rooms. For the latest information on certifications and compatibility, visit www.logitech.com/support/vc-certifications.</p> <p>Certified Hardware: Supports Logitech MeetUp, Rally Camera, Rally System, Rally Plus System, Tap, Tap IP</p> <p>Verified Hardware: Supports Biamp TesiraFORTÉ X 400, QSC Q-SYS Core 8 Flex, Shure IntelliMix P300. For latest information on compatible products, contact your preferred partner.</p> <p>Network Protocol Support: IPv4, IPv6</p> <p>Proxy Support: IP based Proxy, FQDN based Proxy, Proxy using PAC file</p>		<p>HDMI Out: 2</p> <p>HDMI In: 1</p> <p>USB: 3x Type A</p> <p>Network: 10/100/1G Ethernet</p> <p>WiFi: 802.11a/b/g/n/ac</p>
PACKAGE CONTENTS		DIMENSIONS
Logitech RoomMate	Mounting plate	Height: 34.5 mm (1.36 in)
Power supply	Remote control	Width: 161 mm (6.34 in)
AC cable	User documentation	Depth: 211 mm (8.31 in)
POWER & CABLES		SECURITY
<p>Power Supply: Auto-sensing</p> <p>Operating Voltage/Power: 100-240V, 19V, 4.74A</p> <p>Power Supply Dimensions: 127 mm x 51 mm x 30 mm</p> <p>DC Cable: 1.5 m/4.9 ft</p> <p>AC Cable: 1 m/3.28 ft</p>		<p>Full Disk Encryption: AES-128</p> <p>Data Encryption: Symmetric Keys, PKI</p> <p>Device Identity: Protected by device attestation</p> <p>Device Access: Authenticated using API</p> <p>Key Protection: Arm TrustZone, RPMP</p> <p>Device Security: Kensington Lock</p>
SOFTWARE		ENVIRONMENTAL
<p>Operating System: Logitech CollabOS 1.4 or higher</p> <p>Device Management: Logitech Sync and supported device management platforms</p>		<p>Operating Temperature: 0 to 40 °C</p> <p>Storage Temperature: -40 to 70 °C</p> <p>Humidity: 10 to 95%</p>
WARRANTY		PART NUMBERS
<p>Standard: two-year limited hardware warranty included</p> <p>Extended: Additional one-year and three-year extended warranties available at the time of hardware purchase. Contact your reseller for availability.</p>		<p>Logitech RoomMate: 950-000085</p> <p>Extended Warranty: 994-000139 (1 year), 994-000170 (3 year)</p>



www.logitech.com/RoomMate

Contact your reseller
or contact us at

www.logitech.com/vcsales

Logitech Americas
7700 Gateway Blvd.
Newark, CA 94560 USA

Logitech Europe S.A.
EPFL - Quartier de l'Innovation
Daniel Borel Innovation Center
CH - 1015 Lausanne

Logitech Asia Pacific Ltd.
Tel : 852-2821-5900
Fax : 852-2520-2230

© 2021 Logitech. Logitech, the Logitech logo and other Logitech marks are owned by Logitech and may be registered. All other trademarks are the properties of their respective owners. Logitech assumes no responsibility for any errors that may appear in this publication. Product, pricing and feature information contained herein is subject to change without notice.

Published November 2021