

Stretched Display

SHR-B

Engage customers with powerful content in a slim, versatile package



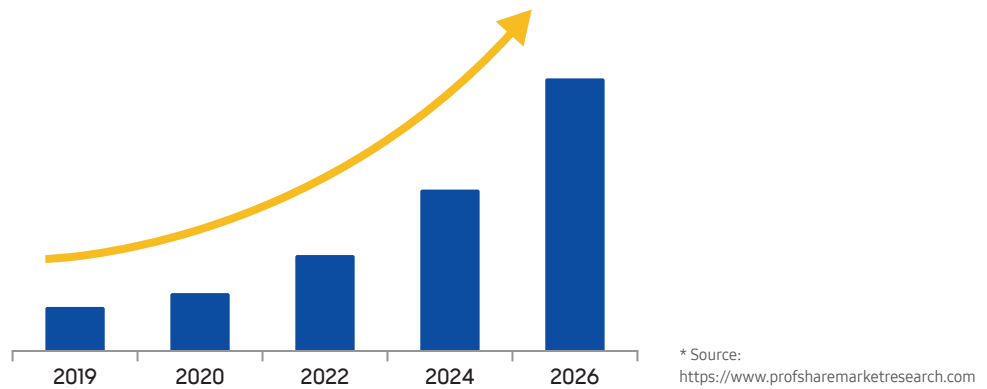
Industry trends

Stretched format displays have become commonplace in locations where businesses are looking to capture attention or clearly deliver information. They are also frequently used in locations where standard-shaped displays may not have the same impact, such as where space is limited. As result of increased demand, global stretched display market is expected to grow rapidly by the end of 2026 with an increase of more than 28 percent.

With so many different potential applications, a stretched display's most important feature is typically its design. Displays with a slim form factor provide more flexibility since displays can be used in spaces of nearly any dimension and clearly deliver information 24/7. Recently, the utility of stretched displays has expanded even further beyond advertising in retail and hospitality locations, but also to deliver critical travel information in locations such as airports, bus and train stations. Because of this, text and messages on the display must remain vivid and sharp even under hard-to-see ambient conditions.

With the most recent technological advances in these displays, such as built-in management controls, easy installation, improved maintenance and usability, the market for these displays is expected to see continued growth for the near future.

Growth potential of stretched display market



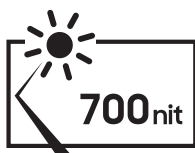
Why Samsung SH37R-B?

Samsung SHR-B stretched displays offer crisp, clear images in nearly any lighting conditions with a non-glare panel and 700 nit brightness. The display's 16:4.5 stretched format and the ability to customize content with portrait and landscape orientation gives users flexibility to maximize viewer engagement with custom content without wasting space or making any sacrifices.

Samsung's SHR-B displays also now come with Samsung's powerful Tizen operating system embedded, giving users powerful capabilities without the need for a separate media player box.

This all-in-one solution is easier for users to manage and features simplified installation and maintenance.

SH37R-B displays are available in a variety of environment, brightness options and features making them flexible and optimized solution for a wide variety of digital signage needs.



Clear Visibility



Stretch Ratio



All-in-one solution

Key features



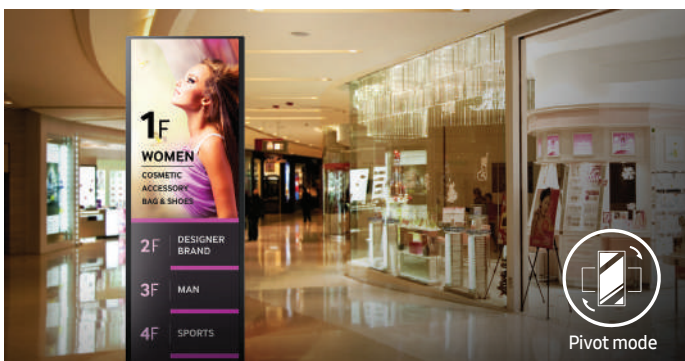
Maximize space and optimize content

Digital signage today needs to be versatile and cost effective with an emphasis on maximizing space efficiency. There has been an increasing need to utilize niche spaces with effective signage solutions. Samsung SHR-B displays, with 16:4.5 wide screen stretched display offer the ability to effectively communicate information in small, narrow spaces such as store shelves, ceilings, and corridors.



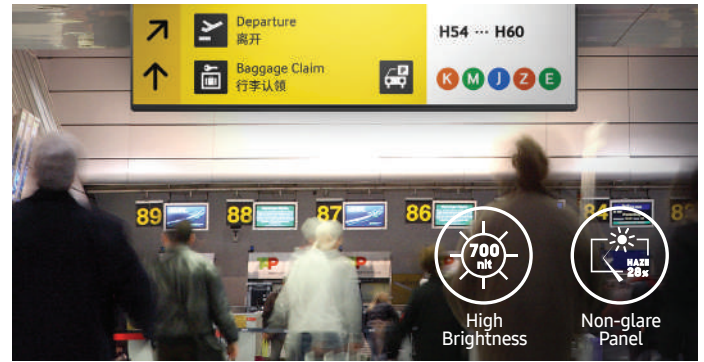
Maximize viewer engagement in a minimum amount of space

Samsung SHR-B displays feature a slim profile with a depth of only 44.8 mm which allows you to maximize available space. This enables the display to be installed in areas where space is limited and allows content to blend seamlessly with the environment in a slim, light, design with reduced power consumption for lower operation costs.



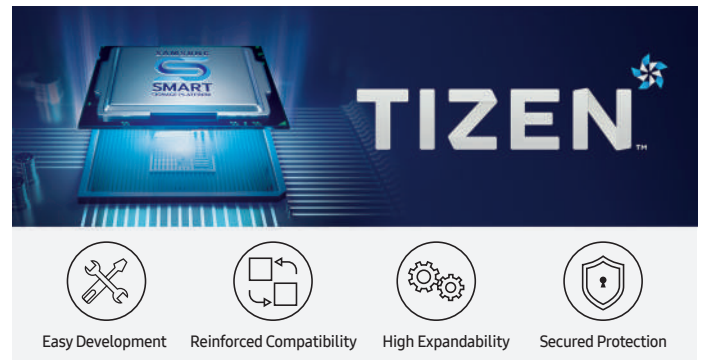
Customize content from portrait to landscape

Samsung SHR-B displays offer pivoting capability along with image rotation software that can change image orientation from portrait to landscape for greater display flexibility. Images do not require rotation in image editing software to make them appear correctly in a different orientation as this capability is handled automatically within the display.



Deliver sharp images in various lighting conditions

Samsung SHR-B displays deliver vibrant, realistic images offering an unparalleled visual experience. Featuring brightness levels of up to 700 nit, these displays deliver the clearest, richest images regardless of lighting conditions. SHR-B Series displays excel in situations with strong light where glare may present an issue.



Powerful, all-in-one solution

The Samsung SMART Signage Platform (SSSP) is an open-source, all-in-one solution embedded in Samsung SMART signage that simplifies installation and maintenance. With SSSP, there is no need for any external devices to communicate with the server or play digital media enjoying easy development, reinforced capability with multiple-web formats, and secured protection.



Daisy chain multiple displays

Due to the relative novelty of UHD in commercial display settings, SHR-B currently offer support for UHD streaming. With UHD resolution content on multiple displays, made possible with daisy chain, users can deliver eye-catching messages in complete clarity for greater impact.

Specifications

Model		SH37R-B	
Panel	Diagonal Size	Class	37"
	Type	Measured	37.0" / 93.98cm
	Resolution		60Hz E-LED BLU
	Pixel Pitch(mm)		1920 x 540 (16:4.5)
	Active Display Area(mm)		0.47(H) x 0.47(V)
	Brightness(Typ.)		904.32 (H) x 254.34 (V)
	Contrast Ratio(Typ.)		700nit
	Viewing Angle(H/V)		4000:1
	Response Time(G-to-G)		178-178
	Display Colors		6.5ms
	Color Gamut		8bit - 16.7M
	Operation Hour		72%
	Haze		24/7
	Display	Dynamic C/R	
H-Scanning Frequency			N/A
V-Scanning Frequency			33.6 - 36.6kHz
Maximum Pixel Frequency			47 - 63Hz
Sound	Speaker Type		48MHz
			N/A
Connectivity	INPUT	RGB	Display Port 1.2
		VIDEO	HDMI 2.0 (2)
		HDCP	HDCP 2.2
		AUDIO	N/A
		USB	USB 2.0 x 1
	OUTPUT	RGB	HDMI 2.0 (1)
		VIDEO	N/A
		AUDIO	Stereo mini Jack
		Power Out	N/A
		EXTERNAL CONTROL	RS232C(in/out), RJ45
Power	Power Consumption	Tuner	IR
		Type	N/A
		Power Supply	Internal
		Max[W/h]	AC 100 - 240V, 50/60 Hz
		Typical[W/h]	70
Mechanical Spec	Dimension (mm)	BTU(Max)	52
		Sleep mode	239
	Weight (kg)	Off mode	less than 0.5W
		Package	less than 0.5W
	VESA Mount	Set	923.3 X 277.6 X 44.8
	Protection Glass	Package	1112 x 363 x 122
	Stand Type	Set	6.3kg
	Bezel Width (mm)	Package	8.8kg
	Operating Temperature		400*200mm
	Humidity		N/A
Key		N/A	
Feature	Special	Orientation	"Slim & Light LFD with Built-in MagicInfo Player S6, SSSP 6.0, WIFI"
		H/W	Landscpe / Portrait
	Internal Player (Embedded H/W)	Processor	Temperature Sensor, Portrait Installation support, Clock Battery(168hrs Clock Keeping), Video Wall Daisy Chain(HDCP2.2:4EA,HDCP1.4:7EA), Shock and Vibration certificated(IEC 61373)
		"On-Chip Cache Memory"	"Auto Source Switching & Recovery, LFD Home UI, Button Lock, Hot key option, Plug&Play (Initial Setting)"
		Clock Speed	Cortex A72 1.7GHz Quad-Core CPU
		"Main Memory Interface"	"L1 Instruction Cache : 48KB, L1 Data Cache : 32KB, L2 Cache : 2MB"
		Graphics	1.7GHz
		Storage (FDM)	"2.5GB, 64-bit LPDDR4 (1.5GHz)"
		Multimedia	"Graphic resolution : 1920x540, Output resolution : 1920x540 - Supports OpenGL ES"
		IO Ports	"8GB (3.88GB Occupied by O/S, 4.12GB Available)"
Operating System	"Video Decoder - MPEG-1/2/4, H.263, H.264/AVC, UHD H.264/AVC, VC-1, AVS+, HEVC, JPEG, PNG, VP8, VP9 Audio Decoder - AC3 (DD), MPEG"		
Certification	Safety	USB 2.0	
	EMC	Tizen 4.0 (VDLinux)	
	Environment	60950-1	
Accessories	Included	Class A	
	Optional		N/A
		Stand	N/A
		Mount	N/A
	Specialty	N/A	
	Media Player	N/A	

About Samsung Electronics Co., Ltd.

Samsung Electronics Co., Ltd. inspires the world and shapes the future with transformative ideas and technologies. The company is redefining the worlds of TVs, smartphones, wearable devices, tablets, cameras, digital appliances, medical equipment, network systems, and semiconductor and LED solutions. For the latest news, please visit the Samsung Newsroom at news.samsung.com.

Smart Signage

For more information about Samsung SMART Signage SH37R-B Series Displays, visit www.samsung.com/business or www.samsung.com/displaysolutions

Copyright © 2021 Samsung Electronics Co. Ltd. All rights reserved. Samsung is a registered trademark of Samsung Electronics Co. Ltd. Specifications and designs are subject to change without notice. Non-metric weights and measurements are approximate. All data were deemed correct at time of creation. Samsung is not liable for errors or omissions. All brand, product, service names and logos are trademarks and/or registered trademarks of their respective owners and are hereby recognized and acknowledged.

Samsung Electronics Co., Ltd.

416, Maetan 3-dong, Yeongtong-gu, Suwon-si, Gyeonggi-do 443-772, Korea