

## PERFORMANCE

### Processor

Intel® Core™ i5-8365U (4C / 8T, 1.6 / 4.1GHz, 6MB)

### Graphics

Integrated Intel HD Graphics

### Chipset

Intel SoC Platform

### Memory

1x 8GB SO-DIMM DDR4-2400

### Memory Slots

Memory soldered to systemboard, no slots, dual-channel

### Max Memory

Up to 8GB DDR4-2400

### Storage

256GB SSD M.2 2280 PCIe® 3.0x4 NVMe®

### Storage Support

One drive, 128GB M.2 2242 SSD

### Card Reader

No card reader

### Audio Chip

High Definition (HD) Audio

### Speakers

3Wx4

### Sensors

IR-based proximity sensor, automatically dim / brighten display (detection angle: +/- 45% (from display); detection distance: 3 meters at maximum)

### Camera

No camera

### Microphone

4x, Array

### Power Supply

90W 88% Adapter

## DESIGN

### Display

10.1" FHD (1920x1200) Anti-glare

### Touchscreen

10-point Multi-touch

### LED indicators

360 degree LED ring on hinge neck and LED on top, indicates status for all users in the room

### Keyboard

No keyboard

### Mouse

No mouse

### Case Color

Black

### Stand

No stand

### Dimensions (WxDxH)

240 x 200 x 185.3 mm (9.45 x 7.87 x 7.30 inches)

### Weight

Around 2.45 kg (5.4 lbs)

## CONNECTIVITY

### Ethernet

Integrated 100/1000M

### WLAN + Bluetooth®

Intel 9560, 11ac 2x2 + BT5.0, vPro®

### Front Ports

1x headphone / microphone combo jack (3.5mm)

### Left Ports

- 2x USB 3.1 Gen 2
- 1x USB-C® 2.0 (support data transfer and display)
- 1x HDMI®-in
- 1x Ethernet (RJ-45)
- 1x DisplayPort™
- 1x power connector

### One Cable

Ports on ThinkSmart™ One Cable: 3x USB 3.2 Gen 1, 1x USB-C 3.2 Gen 1, 2x HDMI out, 1x Ethernet (RJ-45), 1x power connector

## SECURITY & PRIVACY

### Security Chip

Discrete TPM 2.0, TCG certified

### Physical Locks

- Cable lock box and secure cable management door to secure the cable connections
- Kensington® Security Slot™, 3 x 7 mm

## MANAGEABILITY

### System Management

Intel vPro

## SERVICE

### Base Warranty

X12\_3Y\_ONSITE^\*\*\*\*\*^5WSOY57697

### Included Upgrade

3Y Premier Support Upgrade from 3Y Onsite (5WSOY57697)

## CERTIFICATIONS

### Green Certifications

RoHS compliant

### Other Certifications

TÜV Rheinland® Ultra Low Noise

## SOFTWARE

### Operating System

Windows® 10 IoT Enterprise CLB 64, WE (EN/FR/DE/NL/IT)

## ACCESSORIES

### Bundled Accessories

ThinkSmart™ One Cable (1.83m)

## MODEL

<b>TopSeller</b>	: Yes	<b>Announce Date</b>	: 2021-06-15
<b>EAN / UPC / JAN</b>	: 0195891887134	<b>End of Support</b>	: N/A



## Premier Support - A direct 24x7x365 line to our most elite technicians.



Advanced technical support, 24x7x365, in more than 100 markets



Technical Account Managers for proactive relationship and escalation management



Comprehensive hardware & OEM software support



Priority on service delivery and repair parts



Single point of contact for simplified end-to-end case management



Lenovo Service Connect Portal for customized reporting and product support

## Accidental Damage Protection - Protection of your PC from the unexpected.

Experience shows that a significant portion of devices may be damaged (and not covered under warranty) in the first three years. Lenovo's Accidental Damage Protection service covers accidents beyond the system warranty such as drops, spills, bumps and even electrical surges. Make sure your new device has maximum protection, avoid unplanned costs and get peace of mind.

## Base Warranty - Included with the systems you purchase, default 1- or 3-year coverage window.

## Warranty Extensions & Upgrades - Service and protection that's right for your circumstances.

- Pick Up & Return Courier
- Onsite Support
- Technician Installed Customer
- Replaceable Unit Service
- International Warranty Upgrade

Lenovo may not offer the products, services or features discussed in this document in all regions. Lenovo may withdraw an offering at any time. Information is subject to change without notice. Consult your local representative for information on offerings available in your area. Lenovo reserves the right to change specifications or other product information without notice. Lenovo is not responsible for photographic or typographical errors. Lenovo provides this publication "as is" without warranty of any kind, either express or implied, including the implied warranties of merchantability or fitness for a particular purpose.

## Recommended Accessories



### Lenovo 500 FHD Webcam

4XC0V13599

A USB Video Class (UVC) compliant video camera designed for teleconferencing applications on desktop or laptop. It's a reliable digital video device to transfer video data with HD quality through a high-speed USB inte...

## Recommended Services

BEST	4Y Premier Support upgrade from 3Y Premier Support (5WS0Z53125)
BETTER	5Y Premier Support upgrade from 3Y Premier Support (5WS0Z53126)
GOOD	First Year Maintenance (5MS0Z44663)

For a full list of accessories and services, please visit:  
<https://smartfind.Lenovo.com>

**Lenovo**

**PSREF**  
Product Specifications  
Reference

# ThinkSmart Hub

Smarter  
technology  
for all

Lenovo

Whether you're outfitting a large enterprise or a small start-up, ThinkSmart Hub offers smarter collaboration technology for conference rooms of all sizes. This latest generation all-in-one Microsoft Teams Rooms system offers richer audio with full duplex speakers and dual array mics integrated in an even smaller, sleeker device.

In addition to being built on the familiar Microsoft Teams Rooms platform, ThinkSmart Hub is easy to manage using Lenovo's custom-built ThinkSmart Manager software\* along with the more personalized approach of Lenovo's optional Smart Office Professional Services. Combine all this with the built-in protection of Lenovo's ThinkShield security solutions and Intel vPro® platform, and you have a powerful tool for helping teams large and small to connect, share, and collaborate.



\*Included for first year and available at an additional cost on subscription basis after that.

# ThinkSmart Hub



## BUILT FOR COLLABORATION

Built on the Microsoft Teams Rooms platform your employees already know and use, ThinkSmart Hub lets participants communicate via video, voice, or chat to collaborate about content in real time. Its rotatable 10.1-inch touchscreen display makes it easy for members of the group to share control of the meeting.



## CLEANER LOOK AND SOUND

The newly redesigned ThinkSmart Hub delivers outstanding audio quality while taking up less space than ever before. It features four built-in full duplex speakers and four built-in dual array mics for fully immersive 360-degree sound. Plus, it is ultra-low noise certified for even better acoustic design. Sound isn't the only thing that stays clear. With a 20% smaller footprint than previous generations and the addition of ThinkSmart One Cable mechanism, ThinkSmart Hub also reduces tabletop clutter for a cleaner, neater space.



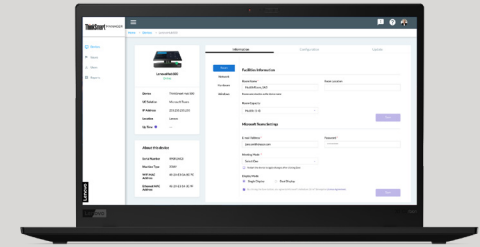
## INCREDIBLY PRODUCTIVE

One-touch meeting start makes it easy for any participant to initiate a Microsoft Teams voice or video conference without dial-in delays. ThinkSmart Hub also keeps IT professionals more productive thanks to Lenovo's preloaded ThinkSmart Manager software.\* This enables you to monitor, manage, and troubleshoot any number of ThinkSmart Hub devices from one, centralized location. Lenovo's optional Smart Office Professional Services provide additional, personalized support every step of the way.



## ALWAYS SECURE

Teams can collaborate fearlessly knowing ThinkSmart Hub is backed by Lenovo ThinkShield, the most comprehensive, end-to-end security solution on the market that combines industry-leading secure hardware, software, services, and processes. This includes options for BIOS locking, I/O locking, and USB Smart Lock. These security solutions are further complemented by the Intel vPro® platform, which brings together the best of Intel innovations to better safeguard data and devices, while a Kensington™ MiniSaver lock slot protects against physical theft.

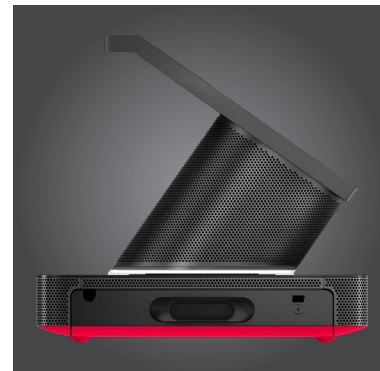


## Lenovo ThinkSmart Manager

This proprietary, optional manageability console gives your IT team the power to deploy, monitor, and troubleshoot your entire fleet of Lenovo ThinkSmart devices all from one place.

- Leverage a single console to remotely deploy, manage, configure, update, and resolve issues
- See real-time status by device and receive live at-a-glance issues lists
- Streamline actions across multiple devices with "apply all" option
- Generate reports to keep tabs on device issues and trends
- Take advantage of elevated security options

\*Included for first year and available at an additional cost on subscription basis after that.



## ThinkSmart Hub

# performance

### PROCESSOR

Intel Core™ i5-8365U vPro®

### OPERATING SYSTEM

Windows® 10 IoT Enterprise SAC 64 bit

### MEMORY

8 GB (Dual-Channel) DDR4-2400 MHz

### STORAGE

128 GB PCIe TLC SSD

### GRAPHICS

Intel UHD Graphics 620

### AUDIO

4x premium-tuned speakers

4x omnidirectional mics for 360-degree audio capture

### SENSORS

IR-based human proximity sensor

### INDICATOR LIGHTS

LED status light on hinge and top of screen

# security

TPM 2.0

Kensington™ MiniSaver lock slot

ThinkSmart One Cable

# connectivity

### INPUT PORT

1x HDMI-In

### USER ACCESSIBLE AND THINKSMART ONE CABLE PORTS

2x HDMI-Out

1x RJ45 Gigabit Ethernet

3x USB-A 3.2 Gen 1

1x USB-C 3.2 Gen 1

1x 3.5 mm audio (on base)

### WIFI

WLAN 802.11 AC (2 x 2)

Bluetooth® Low Energy (LE) 5.0



# design

### DISPLAY

10.1" touch screen (1920 x 1080 resolution, 320 nits) with 16:10 aspect ratio, 360-degree rotatable, anti-glare and smudge resistant

### DIMENSIONS (W X D X H)

240.0 x 200.0 x 185.3 mm

9.45 x 7.87 x 7.30 in

### WEIGHT

2.47 kg/5.45 lbs.

# manageability

ThinkSmart Manager

### LANGUAGES SUPPORTED

English

French

Japanese

# warranty

Base: 3 Year Onsite + Premier Support

# optional services

Lenovo's Smart Office Professional Services offer personalized, end-to-end support to help you make the most of your ThinkSmart technology investment.

### ASSESS

Lenovo is here to help identify any issues that could sidetrack your deployment by providing a detailed assessment of potential red flags and a follow-up report.

### DEPLOY

From virtual deployment installation to integration assistance, Lenovo ensures your ThinkSmart devices function optimally in your office environment.

### MAINTAIN

Our easy-to-follow do's and don't's, remote check-ins, and assistance with ongoing security patches and updates take the stress out of updates and device changes.

### TRAIN

Lenovo helps instruct all your audiences—IT and AV support teams, end users, and executives—on how to fully take advantage of your new technology.

### ONSITE

Lenovo provides white glove treatment through a dedicated, on-site specialist who can complete physical set up, installation, configuration, and device troubleshooting.



Smarter meetings start with ThinkSmart.

Learn more at [www.lenovo.com/ThinkSmart](http://www.lenovo.com/ThinkSmart)

©2020 Lenovo. All rights reserved. These products are available while supplies last. Prices shown are subject to change without notice. For any questions concerning price, please contact your Lenovo Account Executive. Lenovo is not responsible for photographic or typographic errors. Warranty: For a copy of applicable warranties, write to: Warranty Information, 500 Park Offices Drive, RTP, NC 27709, Attn: Dept. ZPYA/B600. Lenovo makes no representation or warranty regarding third-party products or services. Trademarks: Lenovo, the Lenovo logo, Rescue and Recovery, ThinkPad, ThinkCentre, ThinkSmart, ThinkStation, ThinkVantage, and ThinkVision are trademarks or registered trademarks of Lenovo. Microsoft, Windows, and Vista are registered trademarks of Microsoft Corporation. Intel, the Intel logo, Intel Inside, Intel Core, and Core Inside are trademarks of Intel Corporation in the U.S. and/or other countries. Other company, product and service names may be trademarks or service marks of others.

Lenovo

# ThinkSmart Hub

Whether you're outfitting a large enterprise or a small start-up, ThinkSmart Hub offers smarter collaboration technology for conference rooms of all sizes. This latest generation all-in-one Zoom Rooms system offers richer audio with full duplex speakers and dual array mics integrated in an even smaller, sleeker device.

In addition to being built on the familiar Zoom Rooms platform, ThinkSmart Hub is easy to manage using Lenovo's custom-built ThinkSmart Manager software\* along with the more personalized approach of Lenovo's optional Smart Office Professional Services. Combine all this with the built-in protection of Lenovo's ThinkShield security solutions and Intel vPro® platform, and you have a powerful tool for helping teams large and small to connect, share, and collaborate.

\*Included for first year and available at an additional cost on subscription basis after that.



Smarter  
technology  
for all

Lenovo

# ThinkSmart Hub



## BUILT FOR COLLABORATION

Built on the Zoom Rooms platform your employees already know and use, ThinkSmart Hub lets participants communicate via video, voice, or chat to collaborate about content in real time. Its rotatable 10.1-inch touchscreen display makes it easy for members of the group to share control of the meeting.



## CLEANER LOOK AND SOUND

The newly redesigned ThinkSmart Hub delivers outstanding audio quality while taking up less space than ever before. It features four built-in full duplex speakers and four built-in dual array mics for fully immersive 360-degree sound. Plus, it is ultra-low noise certified for even better acoustic design. Sound isn't the only thing that stays clear. With a 20% smaller footprint than previous generations and the addition of ThinkSmart One Cable mechanism, ThinkSmart Hub also reduces tabletop clutter for a cleaner, neater space.



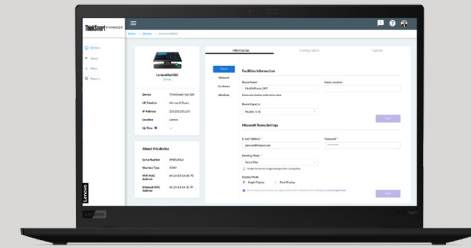
## INCREDIBLY PRODUCTIVE

One-touch meeting start makes it easy for any participant to initiate a Zoom voice or video conference without dial-in delays. ThinkSmart Hub also keeps IT professionals more productive thanks to Lenovo's preloaded ThinkSmart Manager software.\* This enables you to monitor, manage, and troubleshoot any number of ThinkSmart Hub devices from one, centralized location. Lenovo's optional Smart Office Professional Services provide additional, personalized support every step of the way.



## ALWAYS SECURE

Teams can collaborate fearlessly knowing ThinkSmart Hub is backed by Lenovo ThinkShield, the most comprehensive, end-to-end security solution on the market that combines industry-leading secure hardware, software, services, and processes. This includes options for BIOS locking, I/O locking, and USB Smart Lock. These security solutions are further complemented by the Intel vPro® platform, which brings together the best of Intel innovations to better safeguard data and devices, while a Kensington™ MiniSaver lock slot protects against physical theft.



## Lenovo ThinkSmart Manager

This proprietary, optional manageability console gives your IT team the power to deploy, monitor, and troubleshoot your entire fleet of Lenovo ThinkSmart devices all from one place.

- Leverage a single console to remotely deploy, manage, configure, update, and resolve issues
- See real-time status by device and receive live at-a-glance issues lists
- Streamline actions across multiple devices with "apply all" option
- Generate reports to keep tabs on device issues and trends
- Take advantage of elevated security options

\*Included for first year and available at an additional cost on subscription basis after that.



## ThinkSmart Hub

# performance

### PROCESSOR

Intel Core™ i5-8365U vPro®

### OPERATING SYSTEM

Windows® 10 IoT Enterprise SAC 64 bit

### MEMORY

8 GB (Dual-Channel) DDR4-2400 MHz

### STORAGE

128 GB PCIe TLC SSD

### GRAPHICS

Intel UHD Graphics 620

### AUDIO

4x premium-tuned speakers

4x omnidirectional mics for 360-degree audio capture

### SENSORS

IR-based human proximity sensor

### INDICATOR LIGHTS

LED status light on hinge and top of screen

# security

TPM 2.0

Kensington™ MiniSaver lock slot

ThinkSmart One Cable

# connectivity

### INPUT PORT

1x HDMI-In

### USER ACCESSIBLE AND THINKSMART ONE CABLE PORTS

2x HDMI-Out

1x RJ45 Gigabit Ethernet

3x USB-A 3.2 Gen 1

1x USB-C 3.2 Gen 1

1x 3.5 mm audio (on base)

### WIFI

WLAN 802.11 AC (2 x 2)

Bluetooth® Low Energy (LE) 5.0



# design

### DISPLAY

10.1" touch screen (1920 x 1080 resolution, 320 nits) with 16:10 aspect ratio, 360-degree rotatable, anti-glare and smudge resistant

### DIMENSIONS (W X D X H)

240.0 x 200.0 x 185.3 mm

9.45 x 7.87 x 7.30 in

### WEIGHT

2.47 kg/5.45 lbs.

# manageability

ThinkSmart Manager

### LANGUAGES SUPPORTED

English

French

Japanese

# warranty

Base: 3 Year Onsite + Premier Support

# optional services

Lenovo's Smart Office Professional Services offer personalized, end-to-end support to help you make the most of your ThinkSmart technology investment.

### ASSESS

Lenovo is here to help identify any issues that could sidetrack your deployment by providing a detailed assessment of potential red flags and a follow-up report.

### DEPLOY

From virtual deployment installation to integration assistance, Lenovo ensures your ThinkSmart devices function optimally in your office environment.

### MAINTAIN

Our easy-to-follow do's and don't's, remote check-ins, and assistance with ongoing security patches and updates take the stress out of updates and device changes.

### TRAIN

Lenovo helps instruct all your audiences—IT and AV support teams, end users, and executives—on how to fully take advantage of your new technology.

### ONSITE

Lenovo provides white glove treatment through a dedicated, on-site specialist who can complete physical set up, installation, configuration, and device troubleshooting.



Smarter meetings start with ThinkSmart.  
Learn more at [www.lenovo.com/ThinkSmart](http://www.lenovo.com/ThinkSmart)

©2020 Lenovo. All rights reserved. These products are available while supplies last. Prices shown are subject to change without notice. For any questions concerning price, please contact your Lenovo Account Executive. Lenovo is not responsible for photographic or typographic errors. Warranty: For a copy of applicable warranties, write to: Warranty Information, 500 Park Offices Drive, RTP, NC 27709, Attn: Dept. ZPYA/B600. Lenovo makes no representation or warranty regarding third-party products or services. Trademarks: Lenovo, the Lenovo logo, Rescue and Recovery, ThinkPad, ThinkCentre, ThinkSmart, ThinkStation, ThinkVantage, and ThinkVision are trademarks or registered trademarks of Lenovo. Intel, the Intel logo, Intel Inside, Intel Core, and Core Inside are trademarks of Intel Corporation in the U.S. and/or other countries. Zoom Rooms is a registered trademark of Zoom Video Communications, Inc. Other company, product and service names may be trademarks or service marks of others.

Lenovo